

Baby Sized Quilt

Approximately 38 x 56"

Baby Fabric Requirements

- 1 1/4 yards White
- 1 1/8 yards Black
- 1/2 yard Gray
- 1/3 yard Binding
- 1 3/4 yards Backing

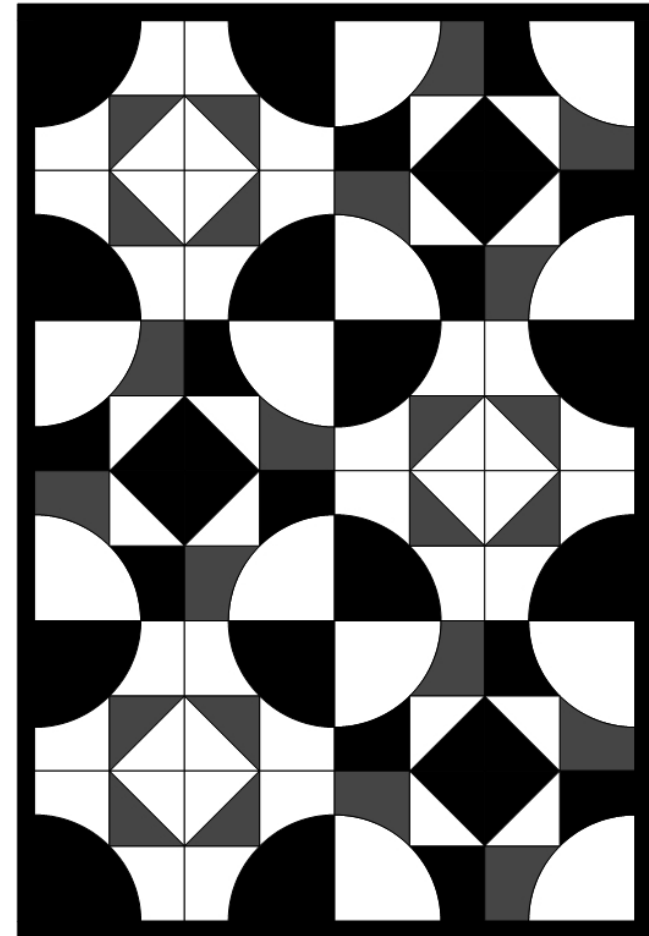
Baby Cutting Instructions

- White
 - Cut 12 – 5 1/2" squares
 - Cut 12 from Template A
 - Cut 12 from Template B
 - Cut 12 from Template C
- Black
 - Cut 6 – 5 1/2" squares
 - Cut 5 – 1 1/2" strips WOF, sew these together to create:
 - 2—1 1/2 x 54 1/2" Side Borders
 - 2—1 1/2 x 38 1/2" Top/Bottom Borders
 - Cut 12 from Template A
 - Cut 12 from Template B
- Gray
 - Cut 6 – 5 1/2" squares
 - Cut 12 from Template C

Baby Assembly

Following the Throw quilt instructions create:

- 12—A Blocks and 12—B Blocks
- Sew blocks together in rows and rows together following layout below, flipping the rows to ensure that the center diamonds line up
- Sew the 2—1 1/2 x 54 1/2" Side Borders to each side of the quilt
- Sew the 2—1 1/2 x 38 1/3" Top/Bottom Borders to the top and bottom of the quilt
- Add back, quilt and bind



Twin Sized Quilt

Approximately 72 x 94"

Twin Fabric Requirements

- 4 yards White
- 3 1/4 yards Black
- 1 1/2 yards Gray
- 2/3 yard Binding
- 5 1/2 yards Backing

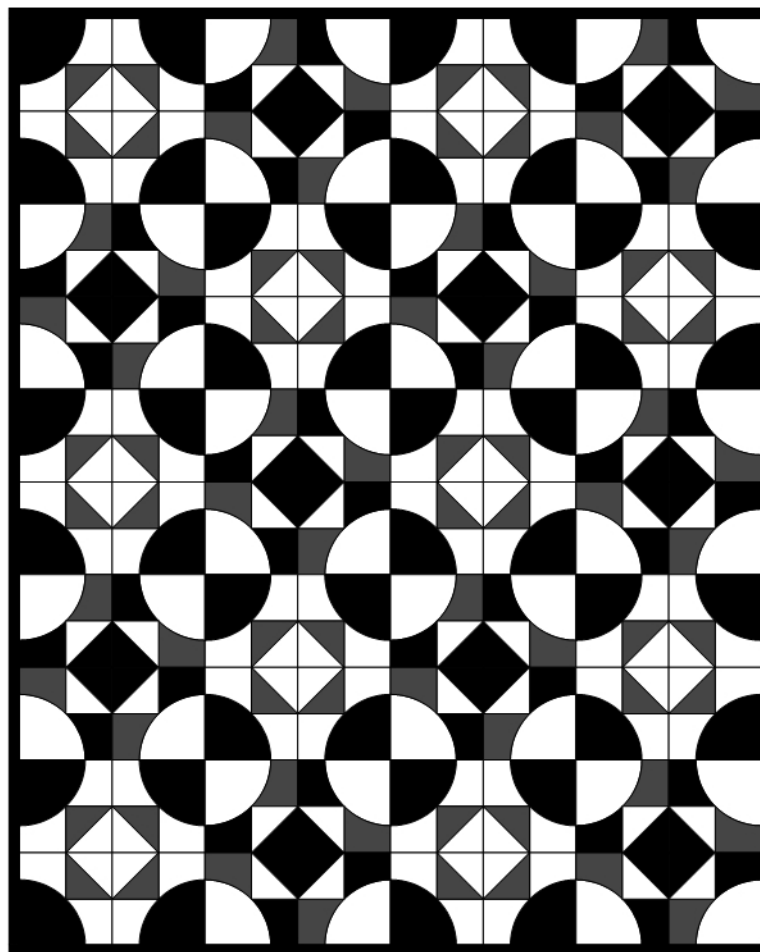
Twin Cutting Instructions

- White
 - Cut 40 – 5 1/2" squares
 - Cut 40 from Template A
 - Cut 40 from Template B
 - Cut 40 from Template C
- Black
 - Cut 20 – 5 1/2" squares
 - Cut 9 – 1 1/2" strips WOF, sew these together to create:
 - 2—1 1/2 x 90 1/2" Side Borders
 - 2—1 1/2 x 74 1/2" Top/Bottom Borders
 - Cut 40 from Template A
 - Cut 40 from Template B
- Gray
 - Cut 20—5 1/2" squares
 - Cut 40 from Template C

Twin Assembly

Following the Throw quilt instructions create:

- 40—A Blocks and 40—B Blocks
- Sew blocks together in rows and rows together following layout below, flipping the rows to ensure that the center diamonds line up
- Sew the 2—1 1/2 x 90 1/2" Side Borders to each side of the quilt
- Sew the 2—1 1/2 x 74" Top/Bottom Borders to the top and bottom of the quilt
- Add back, quilt and bind



Queen Sized Quilt

Approximately 92 x 110"

Queen Fabric Requirements

- 6 yards White
- 4 1/2 yards Black
- 2 yards Gray
- 3/4 yard Binding
- 8 1/2 yards Backing

Queen Cutting Instructions

- White
 - Cut 60 – 5 1/2" squares
 - Cut 60 from Template A
 - Cut 60 from Template B
 - Cut 60 from Template C
- Black
 - Cut 30 – 5 1/2" squares
 - Cut 11 – 1 1/2" strips WOF, sew these together to create:
 - 2—1 1/2 x 108 1/2" Side Borders
 - 2—1 1/2 x 92 1/2" Top/Bottom Borders
 - Cut 60 from Template A
 - Cut 60 from Template B
- Gray
 - Cut 30 – 5 1/2" squares
 - Cut 60 from Template C

Queen Assembly

Following the Throw quilt instructions create:

- 60—A Blocks and 60—B Blocks
- Sew blocks together in rows and rows together following layout below, flipping the rows to ensure that the center diamonds line up
- Sew the 2—1 1/2 x 108 1/2" Side Borders to each side of the quilt
- Sew the 2—1 1/2 x 92 1/2" Top/Bottom Borders to the top and bottom of the quilt
- Add back, quilt and bind

